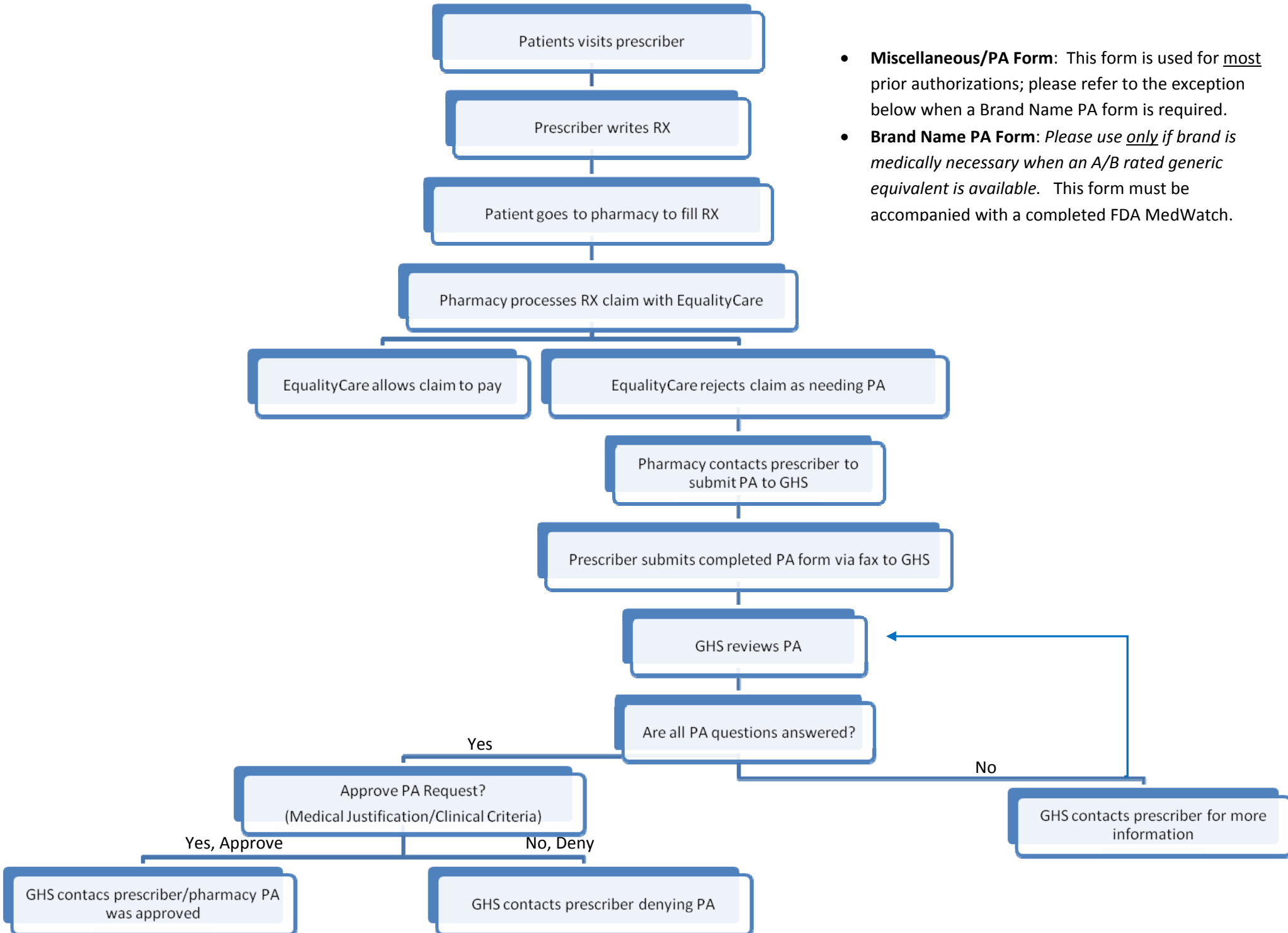


Prior Authorization (PA) Process



- **Miscellaneous/PA Form:** This form is used for most prior authorizations; please refer to the exception below when a Brand Name PA form is required.
- **Brand Name PA Form:** *Please use only if brand is medically necessary when an A/B rated generic equivalent is available.* This form must be accompanied with a completed FDA MedWatch.